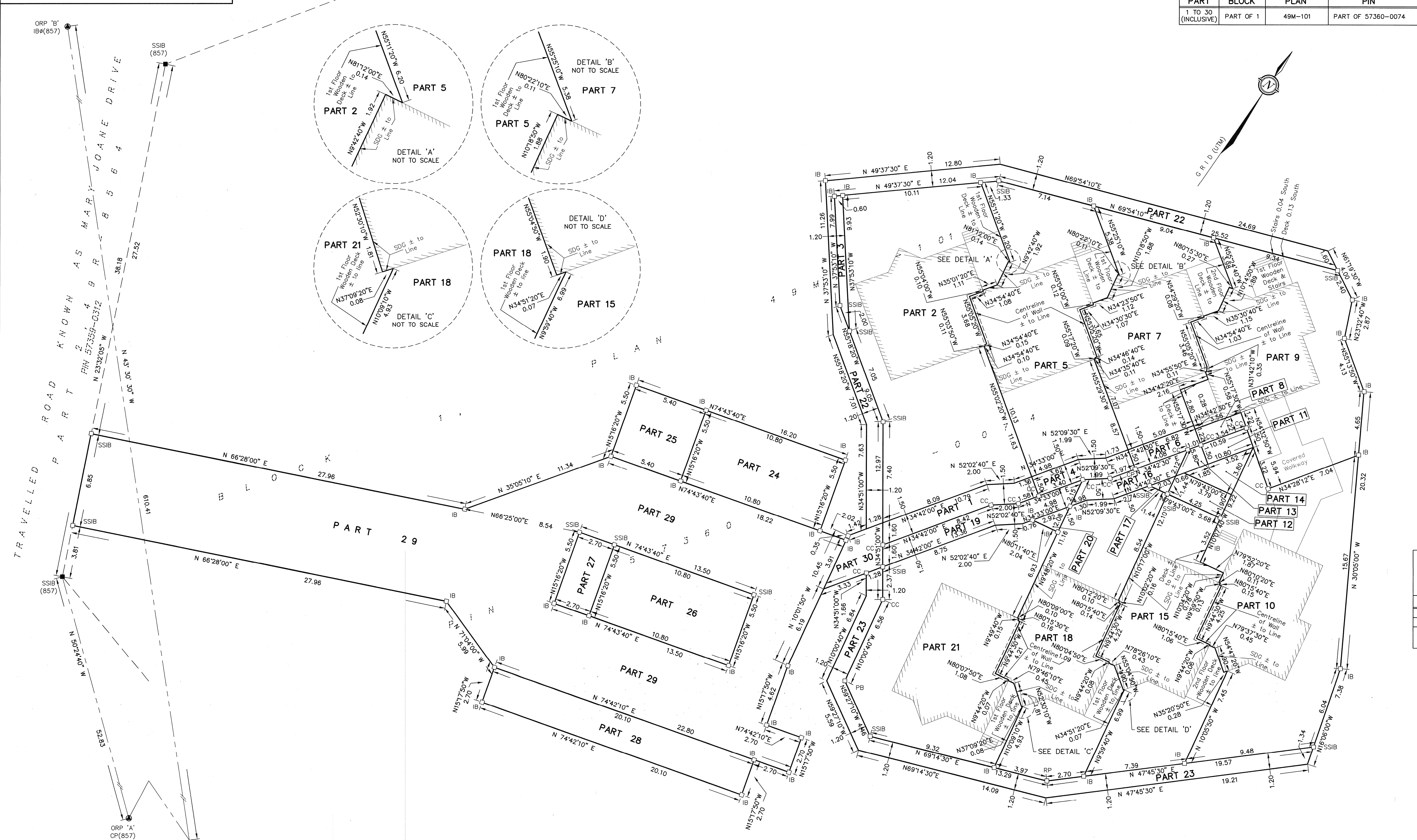


METRIC DISTANCES SHOWN ON THIS PLAN ARE IN METRES AND CAN BE CONVERTED TO FEET BY DIVIDING BY 0.3048



SCHEDULE			
PART	BLOCK	PLAN	PIN
1 TO 30 (INCLUSIVE)	PART OF 1	49M-101	PART OF 57360-0074

I REQUIRE THIS PLAN TO BE DEPOSITED UNDER THE LAND TITLES ACT.

DATE *Nov 5/19*

D.S. McMorran
D.S. McMORRAN, O.L.S.

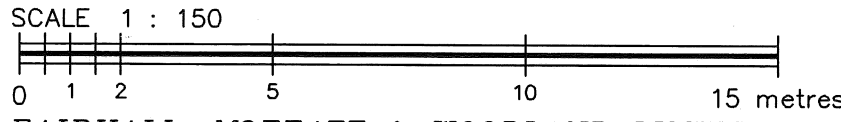
PLAN 49R-19474

RECEIVED AND DEPOSITED

DATE *November 7, 2019*

"L. ARSENAU"
REPRESENTATIVE FOR
LAND REGISTRAR FOR THE
LAND TITLES DIVISION OF
RENFREW - (N° 49)

PLAN OF SURVEY OF
PART OF BLOCK 1
REGISTERED PLAN 49M-101
TOWNSHIP OF GREATER MADAWASKA
COUNTY OF RENFREW



FAIRHALL, MOFFATT & WOODLAND LIMITED
ONTARIO LAND SURVEYORS

NOTES

- BEARINGS ARE GRID, DERIVED FROM OBSERVED REFERENCE POINTS A & B BY REAL-TIME NETWORK (RTN) OBSERVATIONS AND ARE REFERRED TO CENTRAL MERIDIAN, 75°00'W LONGITUDE. UTM ZONE 18, NAD83 (ORIGINAL).
- DISTANCES ARE GROUND AND CAN BE CONVERTED TO GRID BY MULTIPLYING BY THE COMBINED SCALE FACTOR OF 0.99982.
- ALL BUILDINGS ARE 1 STOREY WOOD SIDED UNLESS OTHERWISE NOTED.
- PLASTIC BARS, CUT CROSSES AND CONCRETE PINS WERE SET DUE TO THE UNCERTAINTY OF UNDERGROUND UTILITY LOCATIONS.

LEGEND

- - SURVEY MONUMENT SET
- - SURVEY MONUMENT FOUND
- - PROJECT CONTROL MONUMENT
- SIB - STANDARD IRON BAR
- SSIB - SHORT STANDARD IRON BAR
- IB - IRON BAR
- CP - CONCRETE PIN
- CC - CUT CROSS
- ⊙ - ROUND
- (P) - REGISTERED PLAN 49M-101
- RP - ROCK PLUG
- PB - PLASTIC BAR
- SDG - SIDING
- (857) - FAIRHALL, MOFFATT & WOODLAND LTD., O.L.S.
- PIN - PROPERTY IDENTIFIER NUMBER

COORDINATES WERE DERIVED FROM REAL TIME NETWORK OBSERVATIONS (SMARTNET) UTM ZONE 18, NAD83 (ORIGINAL).

COORDINATES HAVE BEEN DETERMINED TO AN URBAN ACCURACY IN ACCORDANCE WITH SECTION 14(2) OF O.REG 216/10.

POINT ID	NORTHING	EASTING
ORP 'A'	5 014 656.00	360 444.80
ORP 'B'	5 015 098.71	360 024.71

COORDINATES CANNOT IN THEMSELVES BE USED TO RE-ESTABLISH CORNERS OR BOUNDARIES SHOWN ON THIS PLAN.

SURVEYOR'S CERTIFICATE

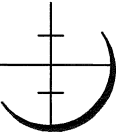
- I CERTIFY THAT:
- THIS SURVEY AND PLAN ARE CORRECT AND IN ACCORDANCE WITH THE SURVEYS ACT, THE SURVEYORS ACT AND LAND TITLES ACT AND THE REGULATIONS MADE UNDER THEM.
 - THE SURVEY WAS COMPLETED ON OCTOBER 23, 2019.

D.S. McMorran
DATE

D.S. McMorran
D.S. McMORRAN
ONTARIO LAND SURVEYOR

**Fairhall
Moffatt &
Woodland**
LIMITED
ONTARIO LAND SURVEYORS

Surveying and Land Information Services
100-600 TERRY FOX DRIVE, KANATA, ONTARIO K2L 4B6
TEL: (613) 591-2590 FAX: (613) 591-1495
www.fmw.on.ca



JOB No.
Y 2 6 2 0 0
E 360462, N 5014751
(UTM, ZONE 18)
REFERENCE No.
9(d)-BLYTHFIELD
S:\0085\726200\DWG 2019-11-04
rp262y_b_v2.dwg (kb)