

PLAN 49M-102

I certify that this Plan is registered in the Land Registry Office for the Land Title Division of Renfrew, No. 49 at 12:24 o'clock on the 13th day of November, 2019 and entered in the Parcel Register for Property Identifier Numbers 57359-052 and 57359-033. Numbers 57359-052 and 57359-033 required to be registered as Plan Document No. **AC53244**.

*A. Kelly*  
 Registered Professional Surveyor

THIS PLAN COMPREHENS ALL OF PINS 57359-082 & 57359-083.

THIS FINAL PLAN OF SUBDIVISION IS APPROVED UNDER S51(80) OF THE PLANNING ACT ON THIS 30th DAY OF October, 2019.

*Ch. Chiu*  
 CHIEF CLERK  
 MUNICIPAL DEVELOPMENT SERVICES  
 DEVELOPMENT AND PROPERTY DEPARTMENT  
 CORPORATION OF THE COUNTY OF RENFREW

PLAN OF SUBDIVISION OF  
 PART OF LOTS 19 AND 20  
 CONCESSION 2  
 Geographic Township of Blythfield  
 Township of Greater Madawaska  
 County of Renfrew

FAIRHALL, MOFFATT & WOODLAND LIMITED  
 ONTARIO LAND SURVEYORS

SCALE 1:1000

- NOTES:
1. POINTS ARE GRID, DERIVED FROM REFERRED REFERENCE POINTS A & B BY REAL-TIME NETWORK (RTN) OBSERVATIONS AND ARE REFERRED TO CENTRAL MERIDIAN, 7200'W LONGITUDE, UTM ZONE 18, NAD83 (ORIGINAL).
  2. DISTANCES ARE GIVEN AND CAN BE CONVERTED TO GRID BY MULTIPLYING BY THE COMBINED SCALE FACTOR OF 0.99982.
  3. PLASTIC BARS AND CONCRETE PINS WERE SET DUE TO THE UNCERTAINTY OF UNDERGROUND UTILITY LOCATIONS.

- LEGEND
- SURVEY MONUMENT SET
  - SURVEY MONUMENT FOUND
  - PROJECT CONTROL MONUMENT
  - STANDARD IRON BAR
  - SHORT STANDARD IRON BAR
  - IRON BAR
  - CONCRETE PIN
  - CUT CROSS
  - PLASTIC BAR
  - SET
  - MEASURED
  - PLAN 48R-15031
  - PLAN 48R-15032
  - SURVEY MONUMENT SET BY FAIRHALL, MOFFATT & WOODLAND LIMITED, O.L.S. (1857)
  - SURVEY MONUMENT SET BY FAIRHALL, MOFFATT & WOODLAND LIMITED, O.L.S. (1857)
  - ADAM KASPRZAK SURVEYING LTD., O.L.S. (1857)
  - MINISTRY OF TRANSPORTATION OF ONTARIO (MTO)
  - SOURCE UNKNOWN
  - REFERENCE POINT
  - PROPERTY IDENTIFIER NUMBER
  - PIN
  - GATE POST (CENTRELINE NOTED)
  - WRF
  - WOOD RAIL FENCE
  - POST & WIRE FENCE
  - CHAIN LINK FENCE
  - CLF

OWNER'S CERTIFICATE

THIS IS TO CERTIFY THAT

BLOCKS 1, 2, 3 AND 4 HAVE BEEN Laid OUT IN ACCORDANCE WITH OUR INSTRUCTIONS.

DATED THIS 25 DAY OF October, 2019.

CLAUDIE PEARS LLC  
 FAIRHALL, MOFFATT & WOODLAND LIMITED  
 PRESIDENT

SURVEYOR'S CERTIFICATE

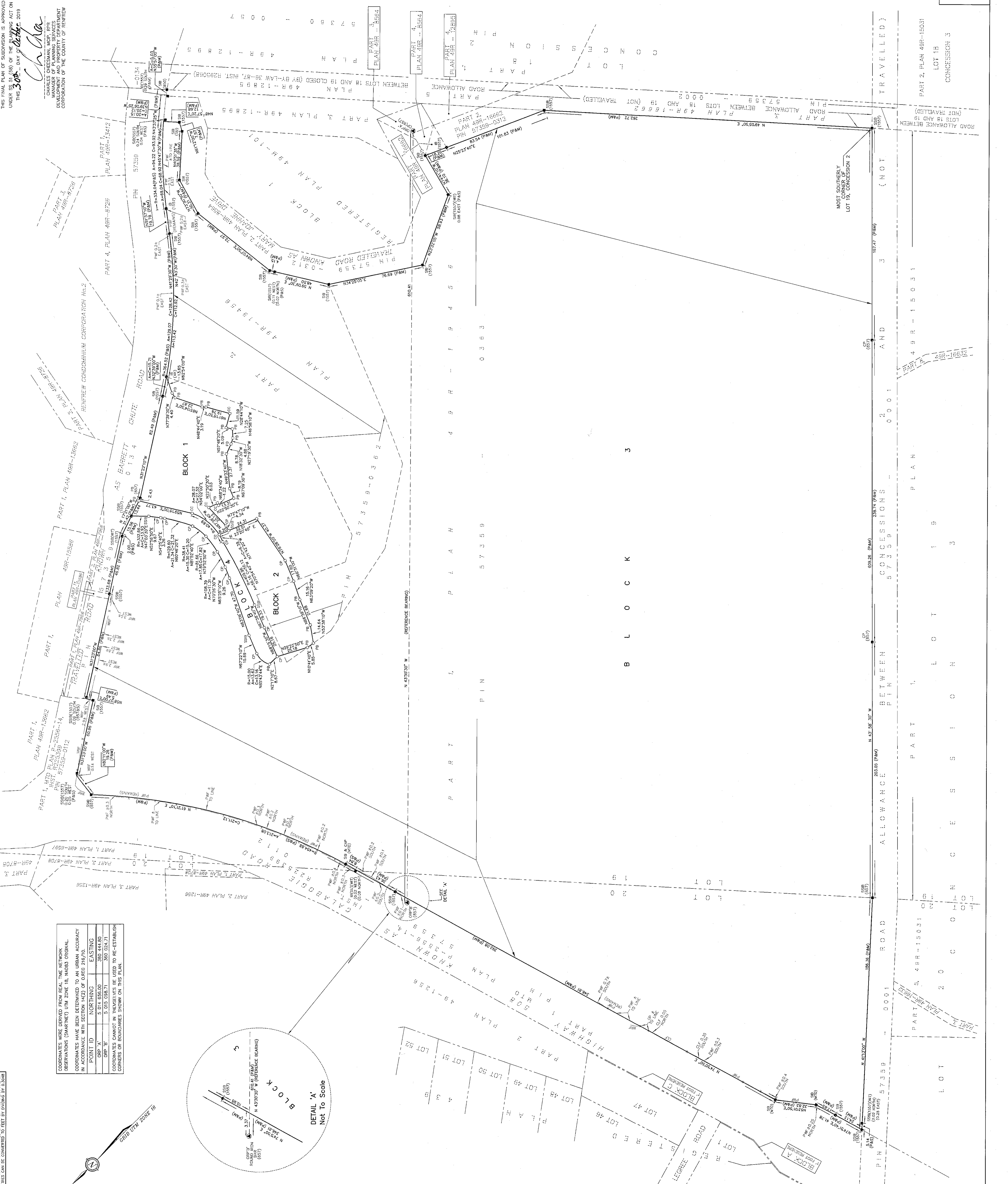
I CERTIFY THAT:

1. THIS SURVEY AND PLAN ARE CORRECT AND IN ACCORDANCE WITH THE SURVEYORS ACT AND THE LAND TITLES ACT AND THE REGULATIONS MADE UNDER THEM.
2. THE SURVEY WAS COMPLETED ON OCTOBER 16, 2019.

*B. S. MacGregor*  
 B. S. MACGREGOR  
 ONTARIO LAND SURVEYOR

**Fairhall Moffatt & Woodland**  
 O.T.T.A.  
 11 - BLYTHFIELD  
 100-1010 10th Street, Renfrew, Ontario, Canada  
 Phone: (613) 861-1111 Fax: (613) 861-1112  
 www.fairhallmoffatt.com

JOB NO. 10300  
 E 30034, N 50507  
 REFERENCE NO.  
 57359-052/033 (P)



COORDINATES WERE DERIVED FROM REAL-TIME NETWORK OBSERVATIONS (SMARTNET) UTM ZONE 18, NAD83 ORIGINAL. COORDINATES HAVE BEEN ROUNDED TO AN URBAN ACCURACY IN ACCORDANCE WITH SECTION 14(2) OF REG. 216/10.

POINT ID	NORTHING	EASTING
CRP 'A'	5 014 658.00	380 444.80
CRP 'B'	5 015 098.71	380 024.71

COORDINATES CANNOT IN THEMSELVES BE USED TO RE-ESTABLISH CORNERS OR BOUNDARIES SHOWN ON THIS PLAN.

